



GAT MONTHLY MEMBERSHIP PROGRESS REPORT

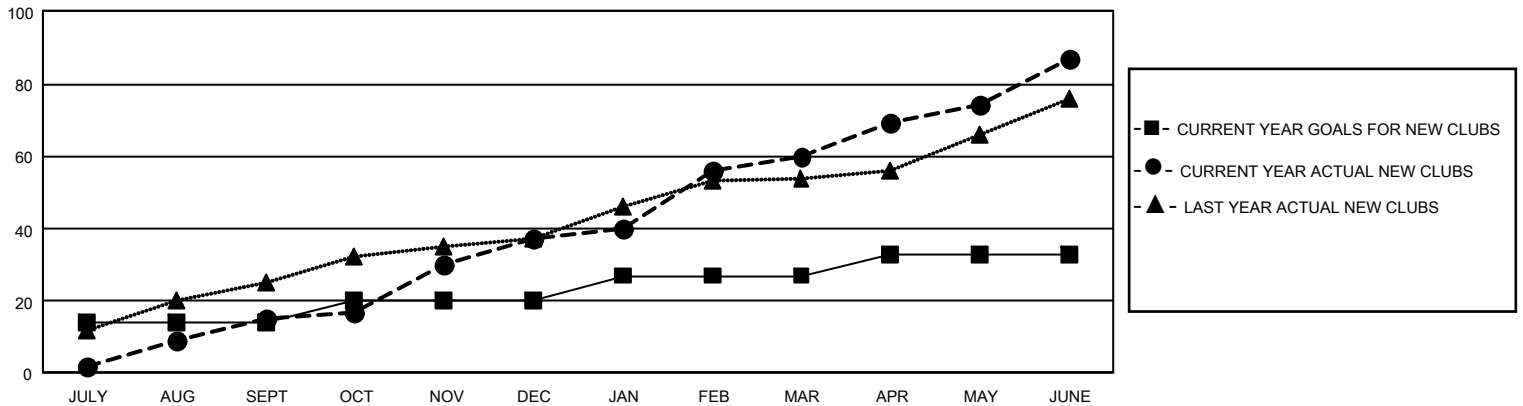
Results as of: 6/30/2025

GMT Constitutional Area 7, Group C

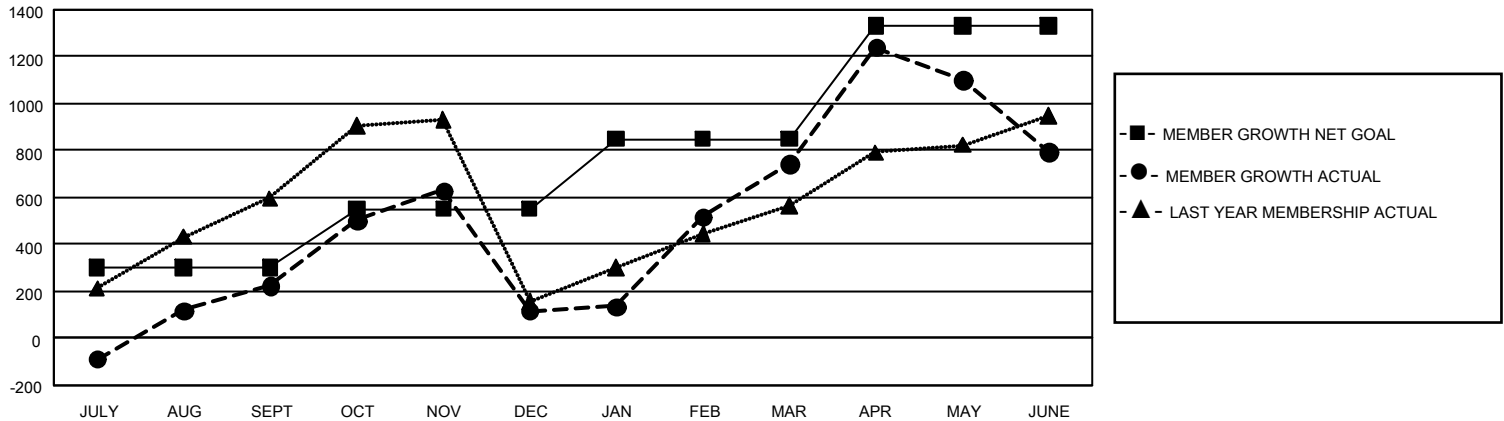
REPORT DOES NOT INCLUDE CLUBS IN UNDISTRICTED AREAS.

Clubs				Members			
RESULTS FOR 2024-2025				RESULTS FOR 2024-2025			
QUARTER	NEW CLUB GOAL	NEW CLUBS	DROPPED CLUBS	QUARTER	MEMBER GROWTH NET GOAL	MEMBER GROWTH ACTUAL	DROPPED MEMBERS ACTUAL (including transfers)
JULY/AUG/SEPT	42	15	1	JULY/AUG/SEPT	300	768	483
OCT/NOV/DEC	18	22	11	OCT/NOV/DEC	250	1,164	1,142
JAN/FEB/MAR	21	23	2	JAN/FEB/MAR	300	876	168
APR/MAY/JUNE	18	27	8	APR/MAY/JUNE	480	1,930	1,483

GOALS AND ACTUAL NEW CLUBS CUMULATIVE



GOALS AND ACTUAL MEMBERS CUMULATIVE



DROPPED CLUBS: 22		366 CLUBS OF 543 ADDED 1 OR MORE NEW MEMBERS	<u>GENDER DISTRIBUTION</u>	
<u>DROPPED MEMBERS</u> DECEASED 39 CLUB CANCELLED 205 OTHER 3,020 <hr/> TOTAL 3,264			MALE	5,962 (41.10%)
			FEMALE	8,534 (58.83%)
			NON BINARY	0 (0.00%)
			PREFER NOT TO ANSWER	11 (0.08%)
		CLICK HERE FOR CUMULATIVE MEMBERSHIP DATA	TOTAL FAMILY UNIT MEMBERS	3,160
			FAMILY MEMBERS PAYING HALF DUES	1,834